

# in negative

for alto flute, cello and piano

I.

Cello & piano begin first. Alto flute begins a few seconds afterwards, playing independently.

Samuel Messer

♩ = c. 54; emerging gently  
*independent of cello & piano*

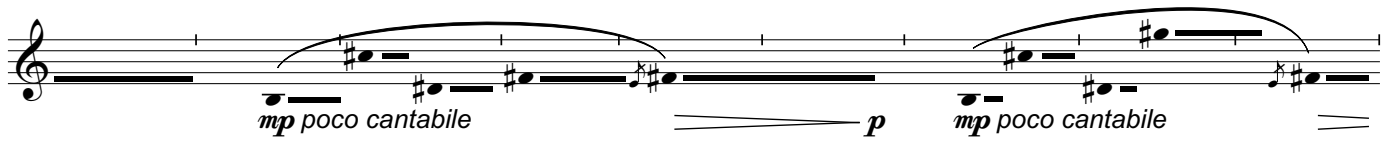
diaphragm emphasis

Alto Flute

## freely, softly, but in foreground

M.M. = c. 54 *legato sempre*

\* Soft accent using diaphragm pressure only (do not tongue).



Play following phrases ad lib., in any order, repeating as desired. When piano stops, play solo for a little while (3/4 phrases), then finish.

